

Texas Desal 2015 – Sept. 30 and Oct. 1, 2015

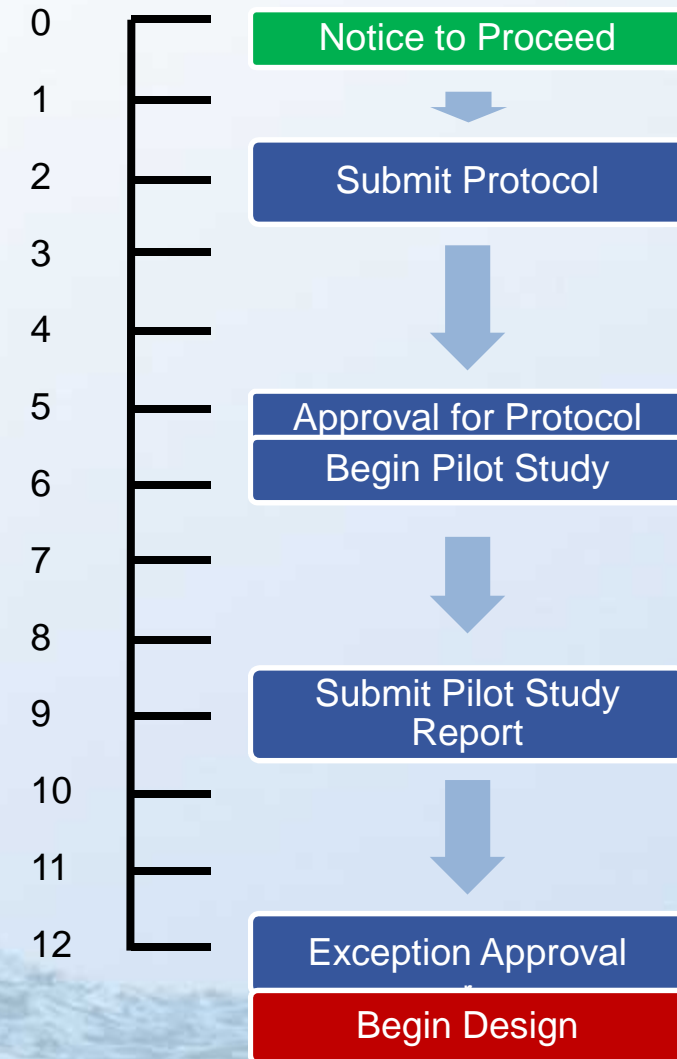
Texas' New Desalination Rules: What Will They Mean For You?

Justin Sutherland, Ph.D., P.E.

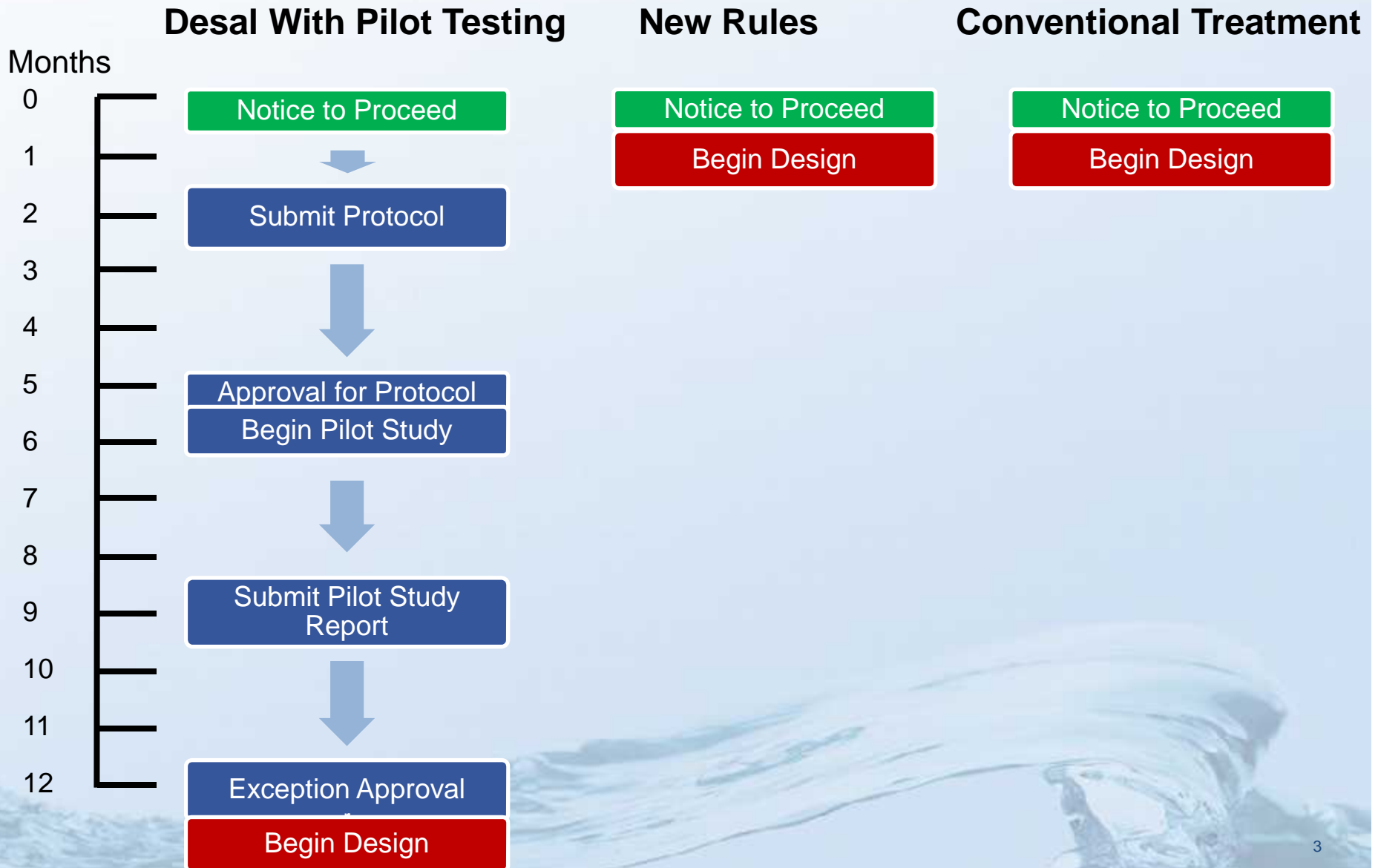
New Rules Streamline Design of RO/NF Systems

Desal With Pilot Testing

Months



New Rules Streamline Design of RO/NF Systems



New Desalination Rules Include Several Components

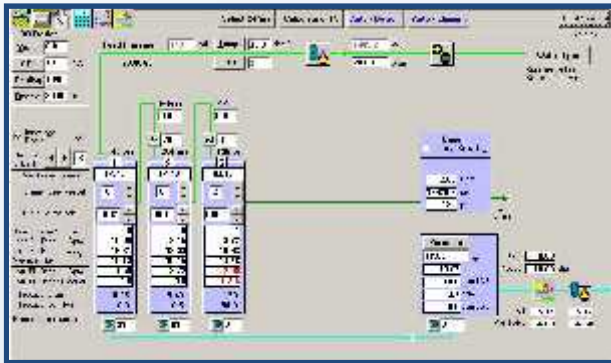
- Engineering Report
 - Design Basis
- Operator Licensing
- Operations Manual

Engineering Report



Multiple Approaches Available for Design Basis

Computer Models



Single-Element Pilot Test



Full-Scale



Demonstration-Scale Pilot Test



Manual of Practice for RO Design Using Models is Available

Manual of Practice for the Use of Computer Models for the Design of Reverse Osmosis/ Nanofiltration Membrane Processes

Final Report

by
Dea DeMacko
Thomas F. Sutherland, P.E.
Justin Sutherland, Ph.D., P.E.



Texas Water Development Board

P.O. Box 13231, Capitol Station
Austin, Texas 78715-0331
January 2011

- Data Requirements
 - Modeling Guidance
 - Design Basis Development
 - Examples
-
- E-mail or call me for a PDF of the final report
 - jsutherland@carollo.com
 - (512) 453-5383

TCEQ Approval Is a 2-Step Process



Before Construction



After Start-Up

Operator Training



Operations Manual



For more information about this project, please contact:

Justin Sutherland, Ph.D., P.E.

8911 Capital of Texas Hwy., Suite 2200

Austin, TX 78759

Phone: (512) 453-5383

jsutherland@carollo.com