

# Mapping Brackley Groundwater

Michael  
Texas  
September

September 22, 2017



## House Bill 30, 84<sup>th</sup> Texas Legislature directed Texas Water Development Board to:

- Define brackish groundwater production zones (BGPZ)
- Estimate productivity over 30 and 50 year periods
- Recommend groundwater monitoring
- Work with stakeholders and groundwater conservation districts
- Complete four aquifers December 2016
- Complete all aquifers December 2022

<http://www.twdb.texas.gov/innovativewater/bracs/HB30.asp>

## Criteria for BGPZ Designation:

- Moderate to high availability and productivity of brackish groundwater
- Hydrogeologic barriers
- Cannot be in EAA, BSEACD or subsidence districts
- Cannot be already in use
- Cannot be permitted for wastewater injection

# Brackish Groundwater Production Zone Studies

The effort of identifying and designating Brackish Groundwater Production Zones is in response to House Bill 30 (84th Legislature, 2015) requirements which included the exclusion of specific aquifers and districts.

This map was generated by the Texas Water Development Board using GIS (Geographical Information System) software. No claims are made to the accuracy or completeness of the information shown herein or to its suitability for a particular use. The scale and location of all mapped data are approximate.

## 2016 Aquifers

- Be. Blaine
- CW. Carrizo-Wilcox
- Gc. Gulf Coast
- Rr. Rustler

## 2017 Aquifers

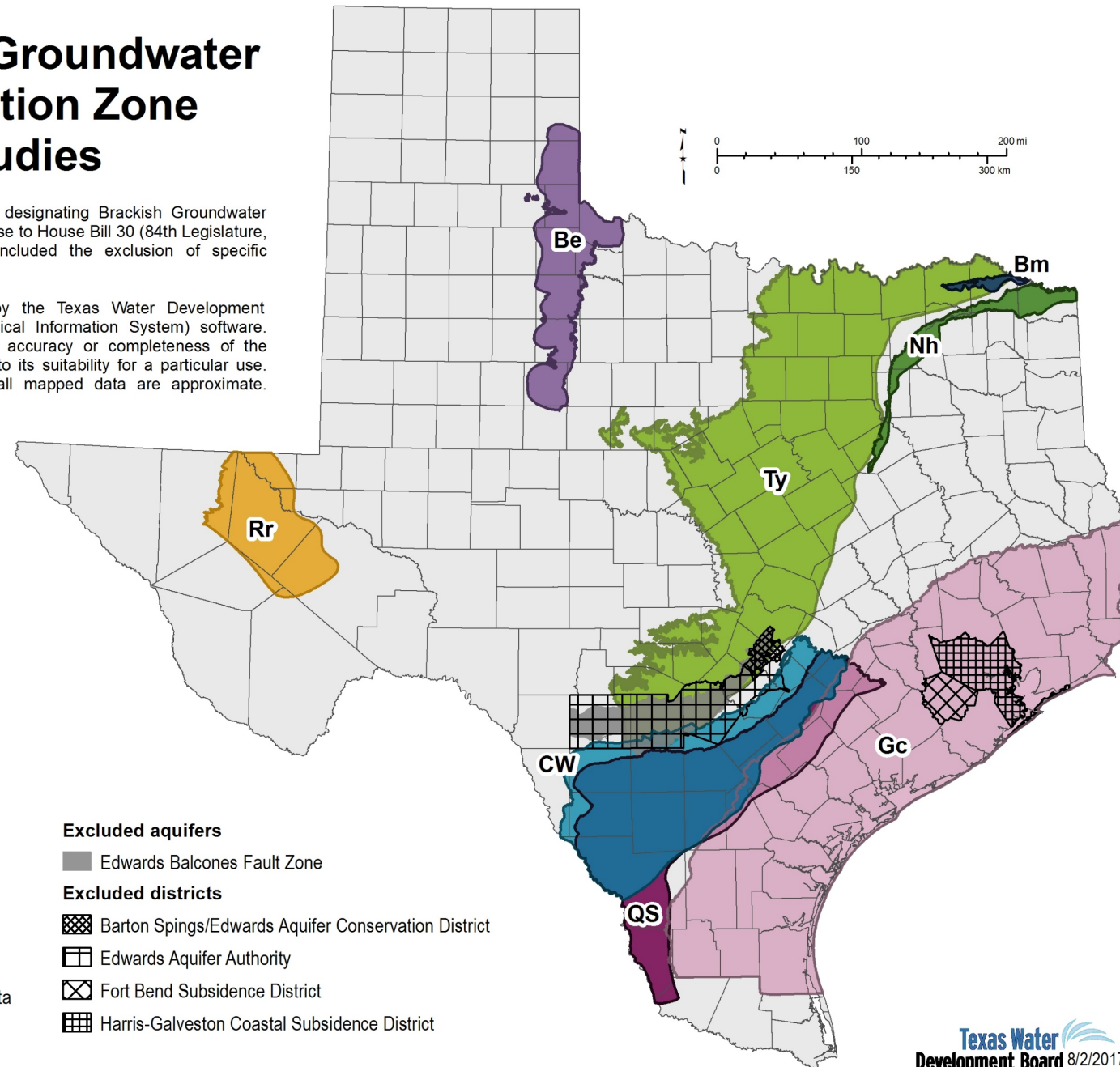
- Bm. Blossom
- Nh. Nacatoch
- QS. Queen City-Sparta
- Ty. Trinity

## Excluded aquifers

- Edwards Balcones Fault Zone

## Excluded districts

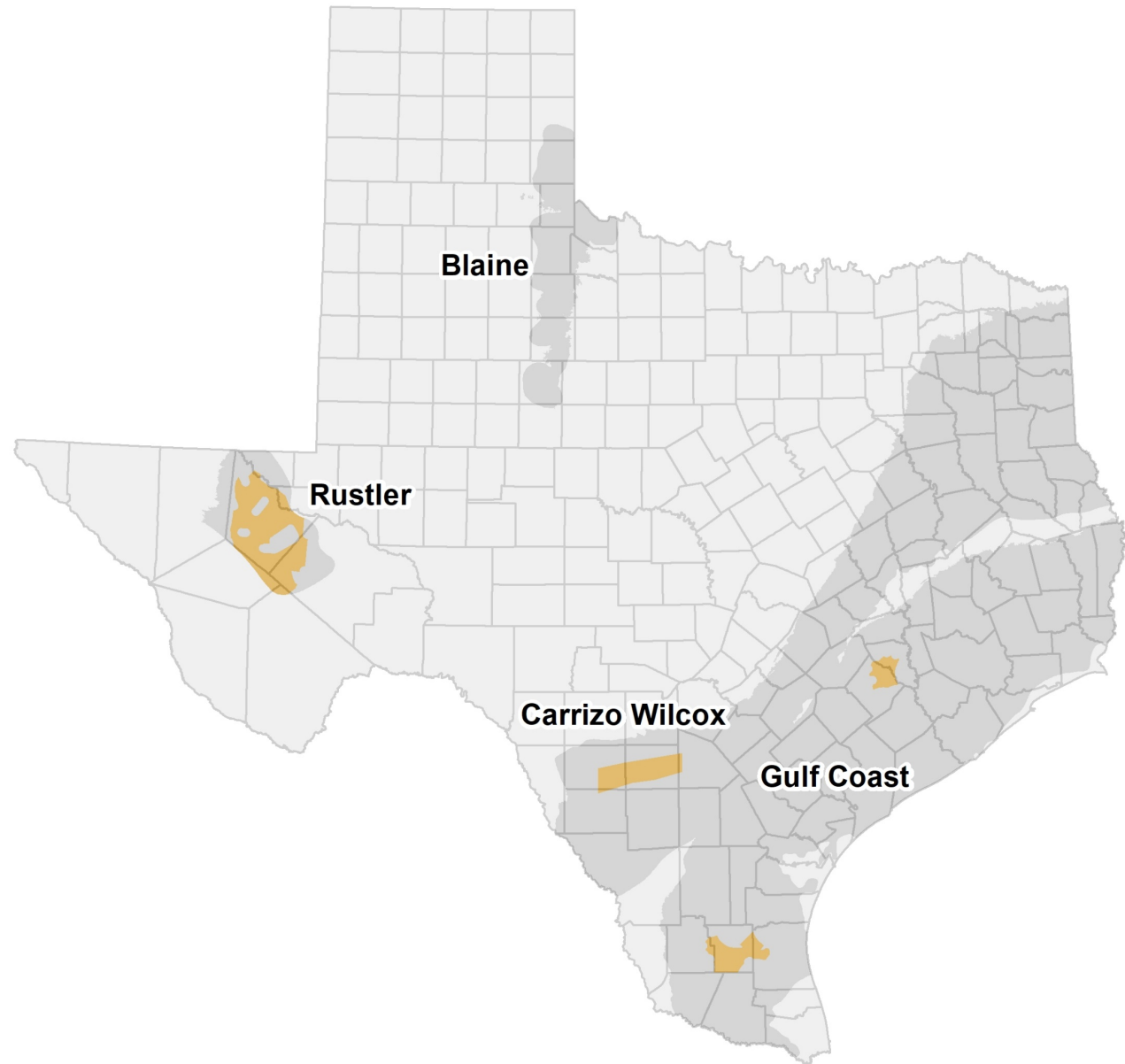
- Barton Spings/Edwards Aquifer Conservation District
- Edwards Aquifer Authority
- Fort Bend Subsidence District
- Harris-Galveston Coastal Subsidence District



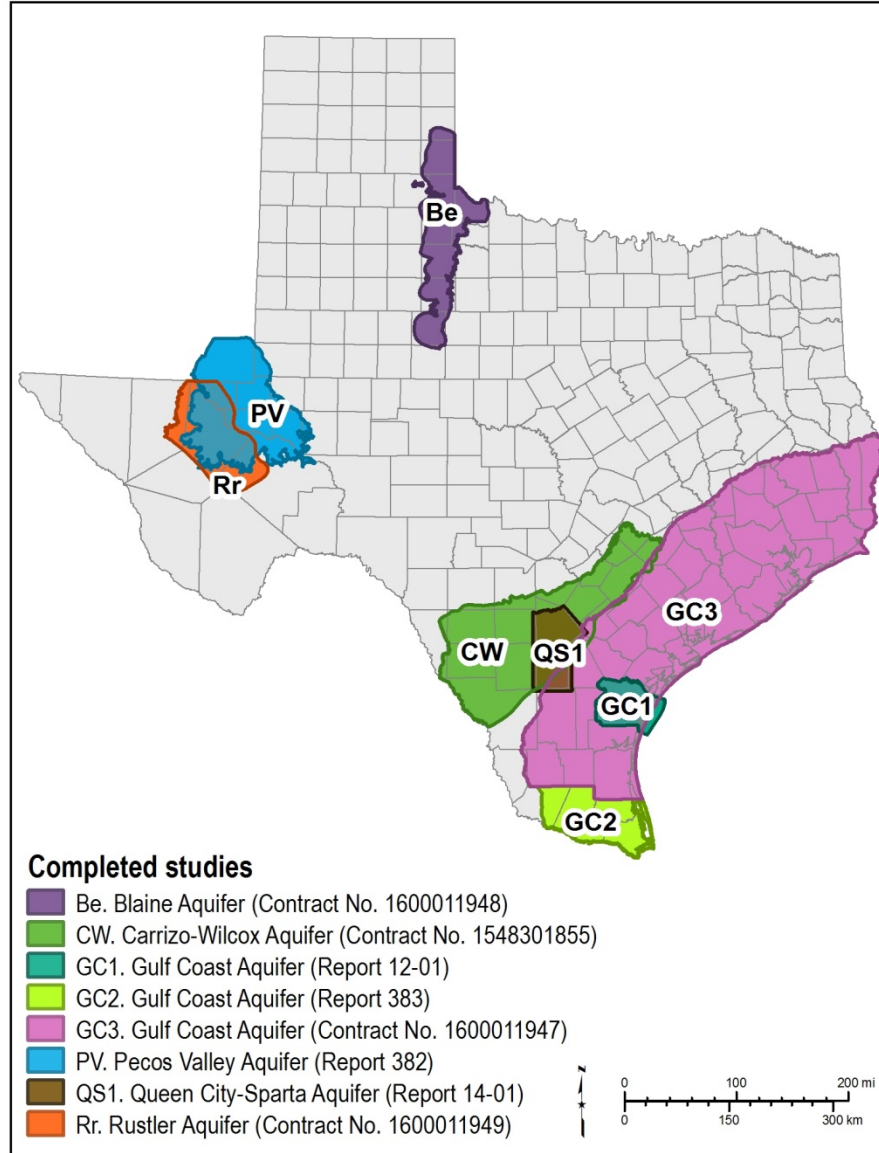




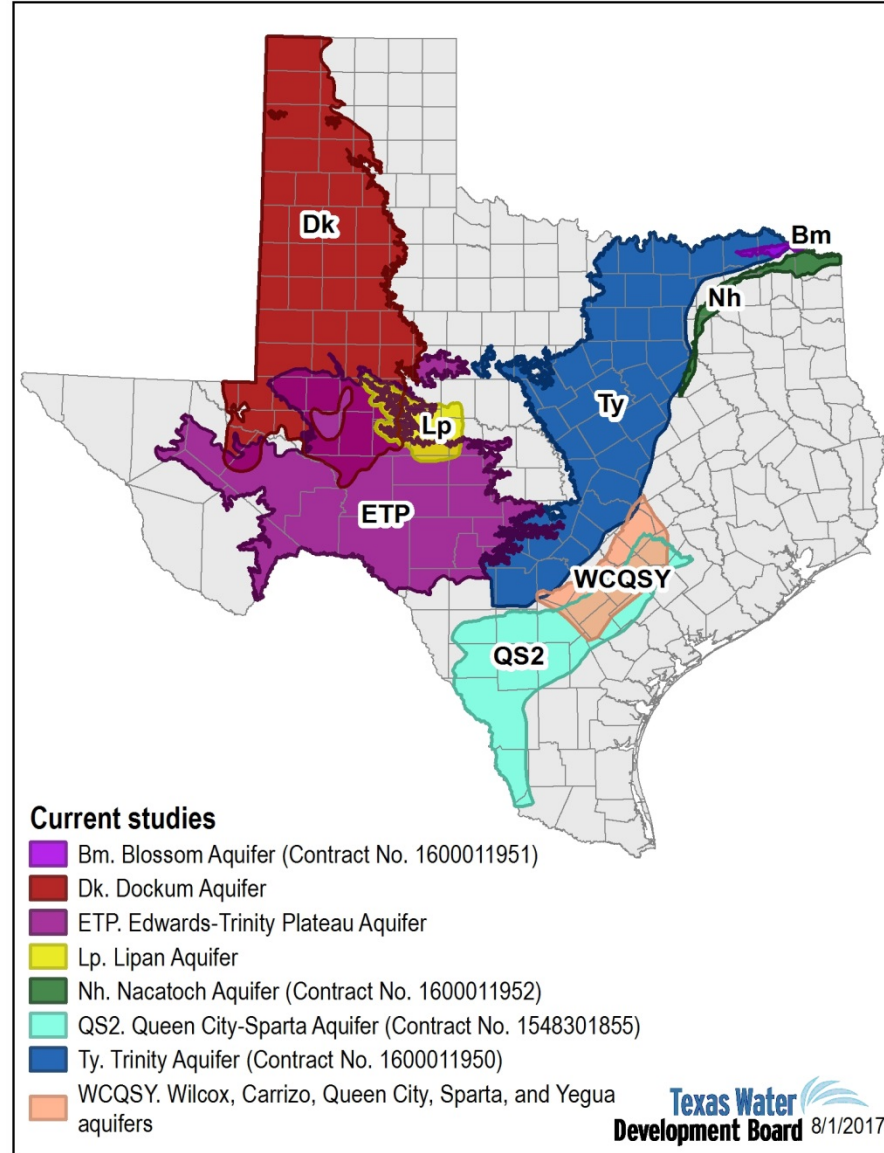
# 2016 Brackish Groundwater Production Zones



# Completed Studies



# Current Studies



## Current Study Status:

Final reports received from contractors: Blossom, Nacatoch, and Trinity aquifers

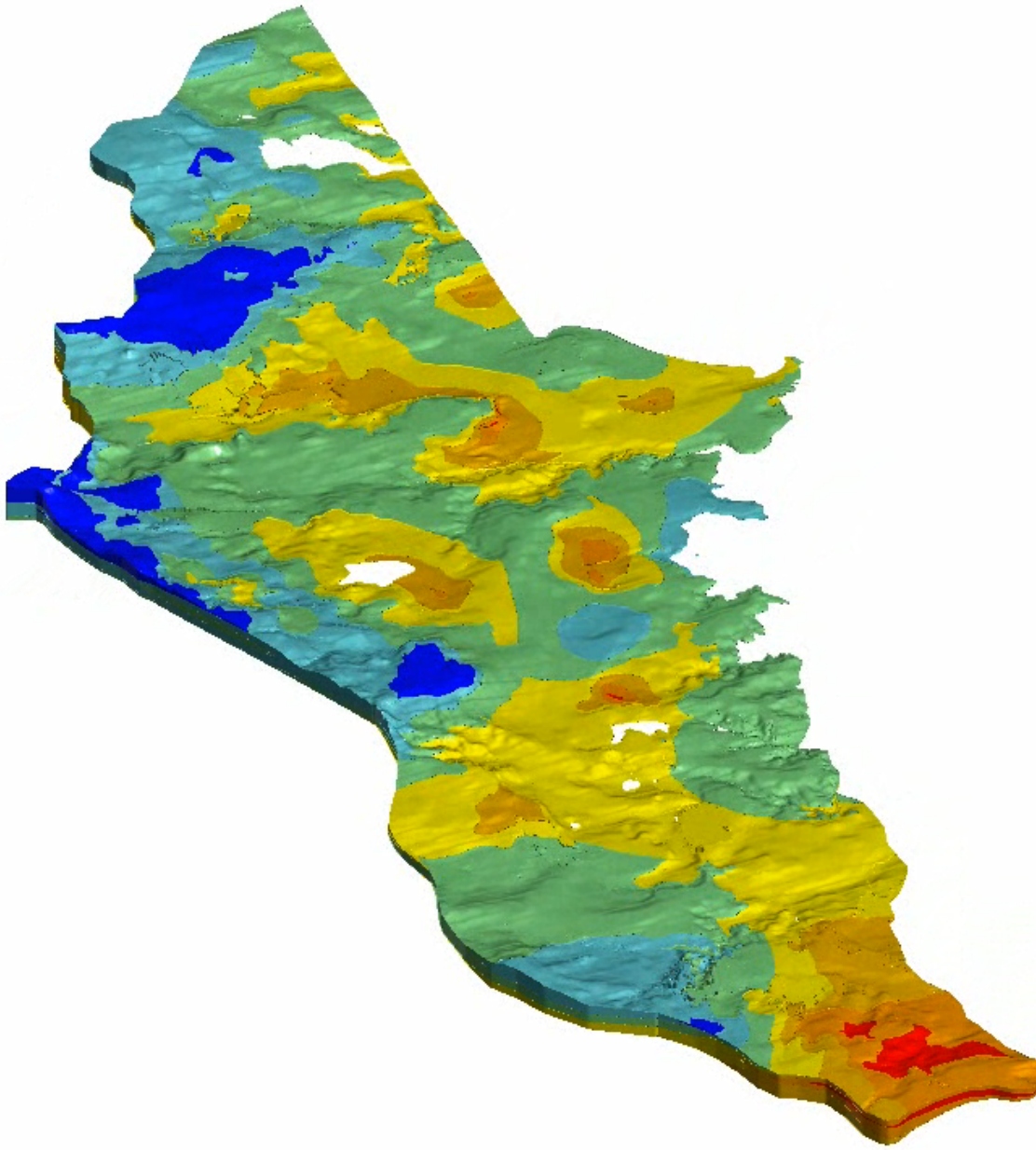
Final report in editorial review: Lipan Aquifer

Final report due this fall from contractor: Groundwater Management Area 13 study: Carrizo-Wilcox, Queen City, Sparta aquifers

Final report due end of this year: Wilcox, Carrizo, Queen City, Sparta, and Yegua aquifers in central Texas

Data collection and analysis: Edwards-Trinity Plateau and Dockum aquifers





# Thank you!

Michelle Sutherland, P.E.

949-702-3622

[msutherland@envisionwater.com](mailto:msutherland@envisionwater.com)

