



Overview of the El Paso Kay Bailey Hutchison Desalination Plant

September 13, 2018

Texas Desal 2018
Managing Cost, Risk and Regulation
Austin, TX

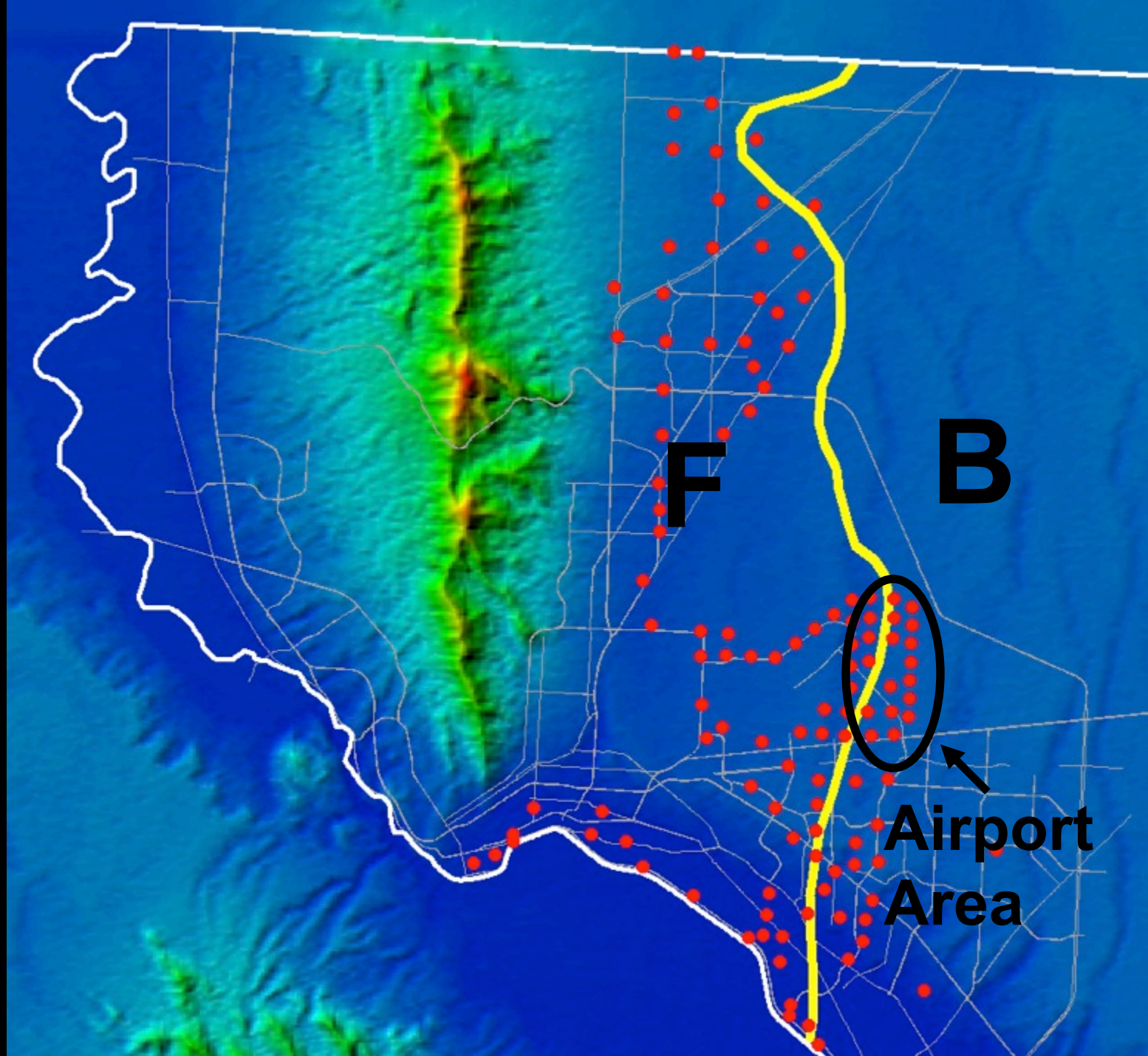
Scott Reinert, P.E.
Water Resources Manager



Kay Bailey Hutchison Desalination Plant

Opened in 2007 to deal with:

- Drought
- Emergency situations
- Growth
- Brackish water intrusion



NEW MEXICO

TEXAS

DEEP WELL
DISPOSAL SITE

BLEND WELLS &
COLLECTION LINE

Loop 358

SOURCE WELLS

RO PLANT SITE

CONCENTRATE LINE
BY DEEP WELL DISP.

© 2003
© 2003



Highlights of 10 year Plant Operation

- Typical Operation- 8 MGD
- February 7, 2011- Big Freeze-22 MGD to help restore water supply in EP.
- Drought Conditions - May 2012, No surface water in May- 19 consecutive days of production over 20 MGD

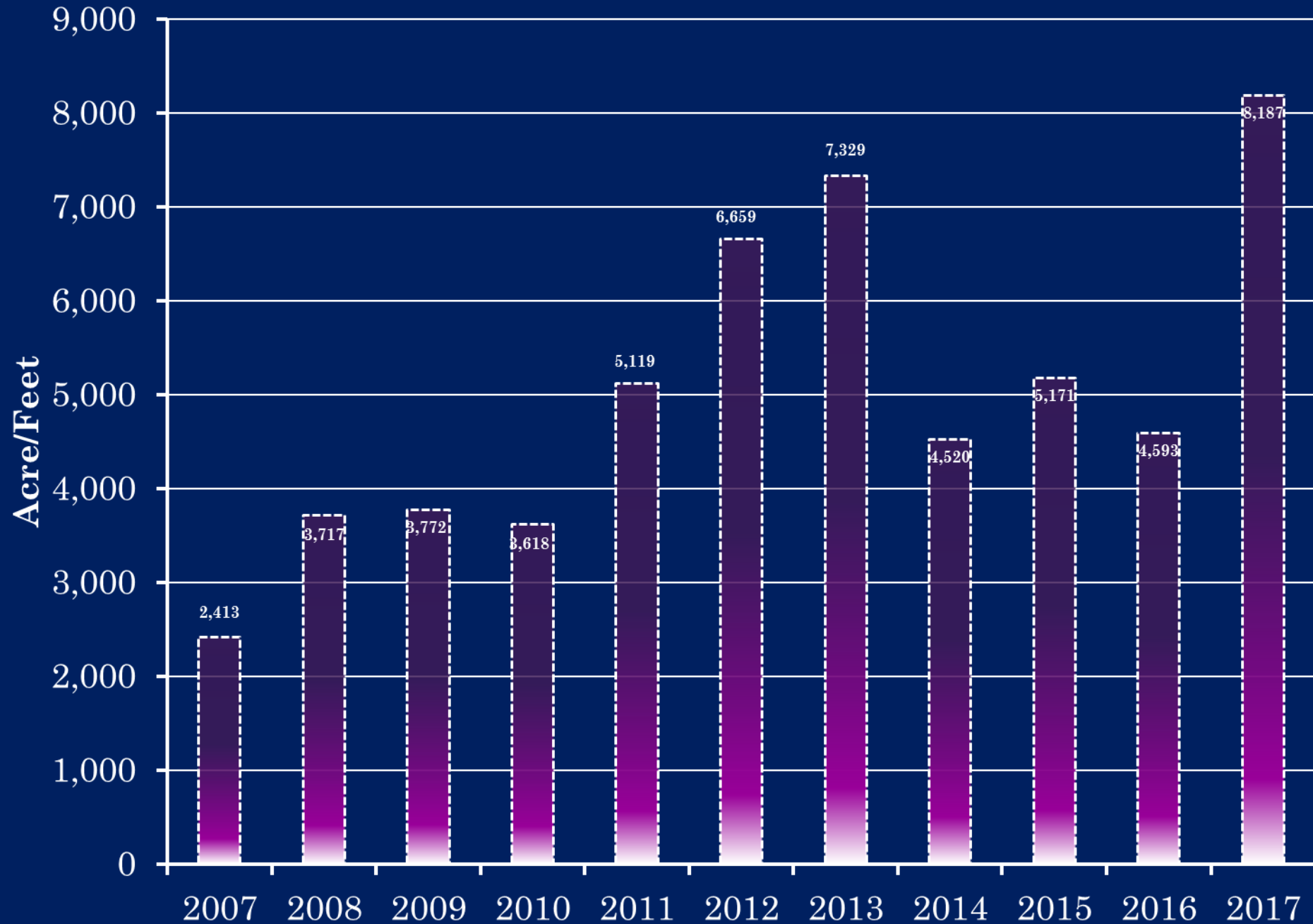


Highlights of 10 year Plant Operation

- Peak Annual Production was 2017 (8187 acre-feet).
- Over 53,000 acre-feet of finished water produced in 10 years.
- Enviro Water Minerals Partnership



Kay Baily Hutchinson Desalination Plant



Future Planning

- Plant production to increase
- Continued to be used in drought relief and interruption of supply
- Planning for additional 8 MGD of plant capacity





Questions

